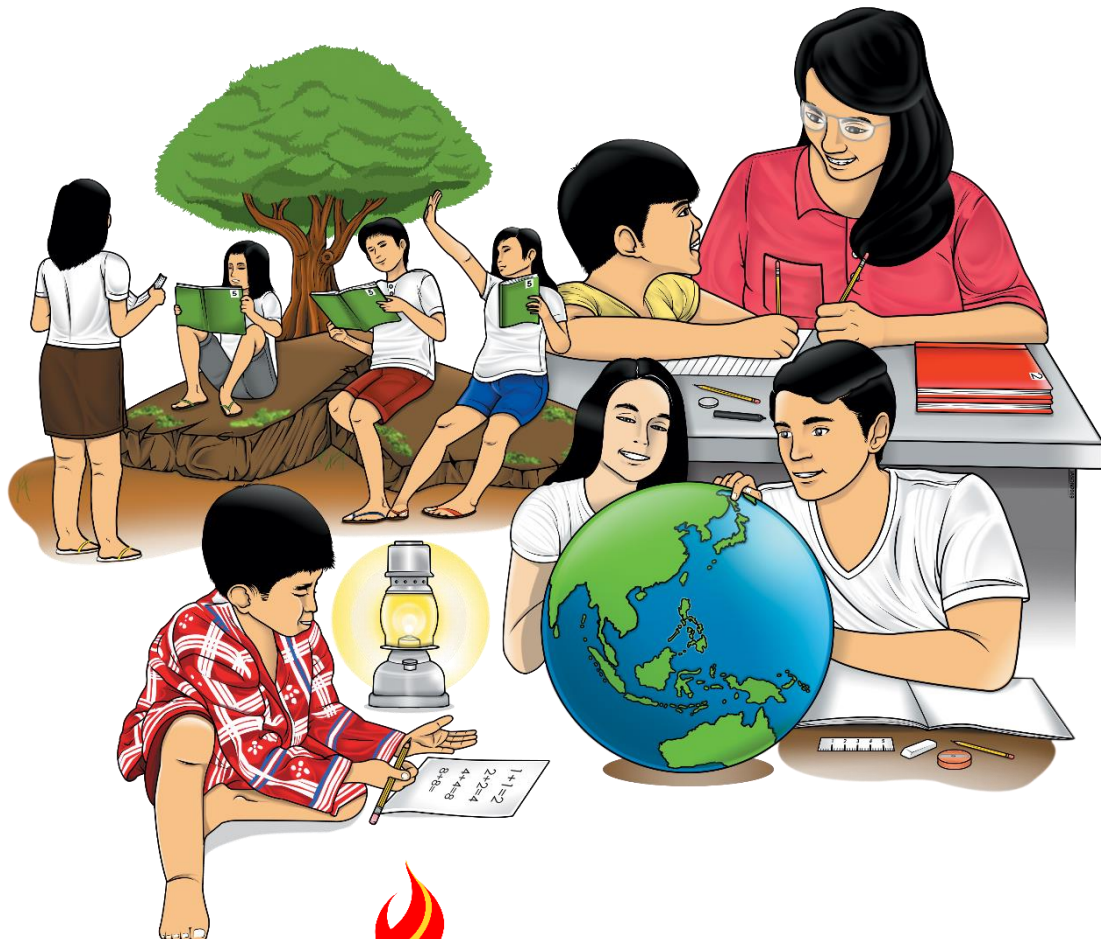


# Science

## Quarter 4 – Module 1: Things in the Surroundings



**Science – Grade 3**  
**Alternative Delivery Mode**  
**Quarter 4 – Module 1: Things in the Surroundings**

**Republic Act 8293, section 176** states that: No copyright shall subsist in any work of the Government of the Philippines. However, prior approval of the government agency or office wherein the work is created shall be necessary for exploitation of such work for profit. Such agency or office may, among other things, impose as a condition the payment of royalties.

Borrowed materials (i.e., songs, stories, poems, pictures, photos, brand names, trademarks, etc.) included in this module are owned by their respective copyright holders. Every effort has been exerted to locate and seek permission to use these materials from their respective copyright owners. The publisher and authors do not represent nor claim ownership over them.

Published by the Department of Education  
Secretary: Leonor Magtolis Briones  
Undersecretary: Diosdado M. San Antonio

**Development Team of the Module**

**Writers:** Teresita A. Canastra, Rhobelyn P. Semacio, Ronald L. Sabidor

**Editor:** Armando S. Vinoya

**Reviewers:** Leah R. Guirigay, Alemer O. Veloso, Divilyn Rodriguez

**Illustrator:** Ronald L. Sabidor

**Layout Artist:** Ronald L. Sabidor

**Management Team:** Evelyn R. Fetalvero

Eufemia T. Gamutin

Janette G. Veloso

Josie T. Bolofer

Analiza C. Almazan

Arlyn B. Lim

Ma. Cielo D. Estrada

Secinia C. Morales

Maria Liza I. Berandoy

**Printed in the Philippines by** \_\_\_\_\_

**Department of Education – Region XI**

Office Address: F. Torres St., Davao City

Telefax: (082) 291-1665; (082) 221-6147

E-mail Address: region11@deped.gov.ph \* lrms.regionxi@deped.gov.ph

# Science

Quarter 4 – Module 1:

Things in the Surroundings

# Introductory Message

For the facilitator:

Welcome to the Science 3 Alternative Delivery Mode (ADM) Module on **Things in the Surroundings!**

This module was collaboratively designed, developed and reviewed by educators both from public and private institutions to assist you as teacher or facilitator in helping the learners meet the standards set by the K to 12 Curriculum while overcoming personal, social, and economic constraints in schooling.

This learning resource hopes to engage the learners into guided and independent learning activities at their own pace and time. Furthermore, this also aims to help learners acquire the needed 21st century skills while taking into consideration their needs and circumstances.

In addition to the material in the main text, you will also see this box in the body of the module:



## *Notes to the Teacher*

This contains helpful tips or strategies that will help you in guiding the learners.

As a facilitator you are expected to orient the learners on how to use this module. You also need to keep track of the learners' progress while allowing them to manage their own learning. Furthermore, you are expected to encourage and assist the learners as they do the tasks included in the module.

For the learner:

## Welcome to the Science 3 Alternative Delivery Mode (ADM) Module on **Things in the Surroundings!**

The hand is one of the most symbolized part of the human body. It is often used to depict skill, action and purpose. Through our hands we may learn, create and accomplish. Hence, the hand in this learning resource signifies that you as a learner is capable and empowered to successfully achieve the relevant competencies and skills at your own pace and time.

This module was designed to provide you with fun and meaningful opportunities for guided and independent learning at your own pace and time. You will be enabled to process the contents of the learning resource while being an active learner.

This module has the following parts and corresponding icons:



### ***What I Need to Know***

This will give you an idea of the skills or competencies you are expected to learn in the module.



### ***What I Know***

This part includes an activity that aims to check what you already know about the lesson to take. If you get all the answers correct (100%), you may decide to skip this module, but if you got 50%-99% you will proceed with the module.



### ***What's In***

This is a brief drill or review to help you link the current lesson with the previous one.



### ***What's New***

In this portion, the new lesson will be introduced to you in various ways such as a story, a song, a

poem, a problem opener, an activity or a situation.



### *What is It*

This section provides a brief discussion of the lesson. This aims to help you discover and understand new concepts and skills.



### *What's More*

This comprises activities for independent practice to strengthen your understanding and skills of the topic. You may check the answers to the exercises using the Answer Key at the end of the module.



### *What I Have Learned*

This includes questions or blank sentence/paragraph to be filled in to process what you have learned from the lesson.



### *What I Can Do*

This section provides an activity which will help you transfer your new knowledge or skill into real life situations.



### *Assessment*

This is a task which aims to evaluate your level of mastery in achieving the learning competency.



### *Additional Activities*

In this portion, another activity will be given to you to enrich your knowledge or skill on the lesson learned. This also tends retention of learned concepts.



### *Answer Key*

This contains answers to all activities in the module.

At the end of this module you will also find:

***References***

This is a list of all sources used in  
developing this module

The following are some reminders in using this module:

1. Use the module with care. Do not put unnecessary mark/s on any part of the module. Use a separate sheet of paper in answering the exercises.
2. Don't forget to answer *What I Know* before moving on to the other activities included in the module.
3. Read the instruction carefully before doing each task.
4. Observe honesty and integrity in doing the tasks and checking your answers.
5. Finish the task at hand before proceeding to the next.
6. Return this module to your teacher/facilitator once you are through with it.

If you encounter any difficulty in answering the tasks in this module, do not hesitate to consult your teacher or facilitator. Always bear in mind that you are not alone.

We hope that through this material, you will experience meaningful learning and gain deep understanding of the relevant competencies. You can do it!



## What I Need to Know

This module was designed and written with you in mind. It is here to help you master the skill in identifying and classifying different things found in your surroundings including their importance. The scope of this module allows it to be used in many different learning situations. The language used recognizes the different vocabulary level of students. The lessons are arranged to follow the standard sequence of the course. But the order in which you read them can be changed to be similar with the textbook you are now using.

The module is divided into four lessons, namely:

- Lesson 1 – Landforms in the Community
- Lesson 2 – Water forms
- Lesson 3 – Things in the Surroundings
- Lesson 4 – Importance of Surroundings to People and Other Living Things

After going through this module, you are expected to:

1. identify the different kinds of landforms;
2. identify the different kinds of waterforms;
3. identify the things found in the surroundings;
4. classify living and non-living things;
5. relate the importance of surroundings to people and other living things





## What I Know

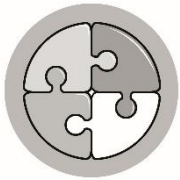
Read each sentence carefully. Choose the letter of the correct answer. Write your answer on the blank provided.

- \_\_\_\_\_ 1. It is the shape and form of the earth's surface.  
a. waterform                      c. environment  
b. landform                      d. earth
- \_\_\_\_\_ 2. Which one of the given choices is NOT a landform?  
a. volcano                      c. mountain  
b. ocean                      d. valley
- \_\_\_\_\_ 3. The earth is composed of 70% water. Which one is the largest body of water on earth?  
a. river                      c. ocean  
b. lake                      d. stream
- \_\_\_\_\_ 4. All of the given choices are living things EXCEPT one. Which one is NOT a living thing?  
a. duck                      c. water  
b. tree                      d. bird
- \_\_\_\_\_ 5. Which one is the most common use of plants to people?  
a. food and medicine                      c. shelter  
b. playing games                      d. clothing

## Lesson

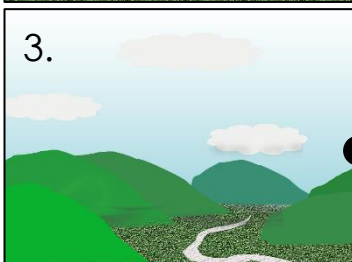
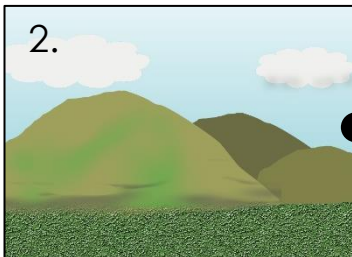
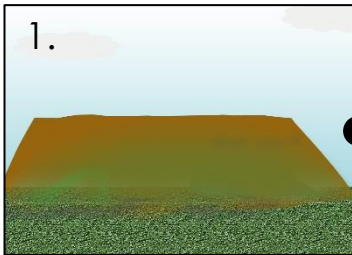
# 1

## Landforms in the Community



### What's In

Draw a line to match the picture to its name.



**volcano**

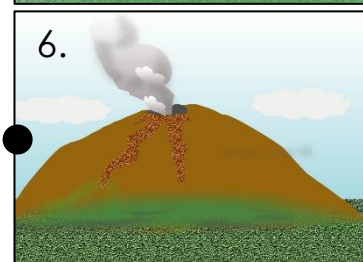
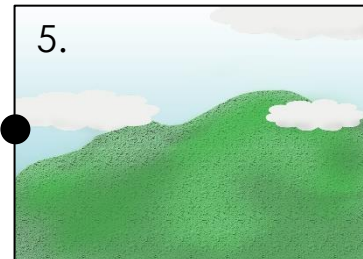
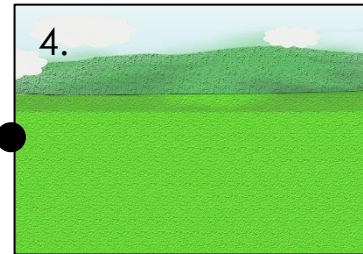
**hills**

**plain**

**mountain**

**valley**

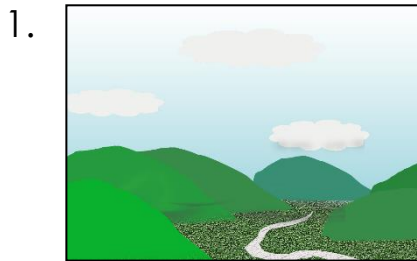
**plateau**



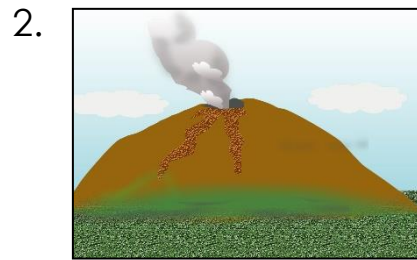


## What's New

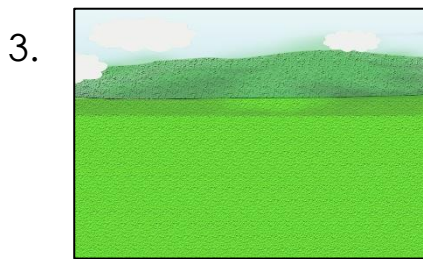
Identify the name of each picture. Choose the answer from the names given inside the box. Write your answer on the blank provided.



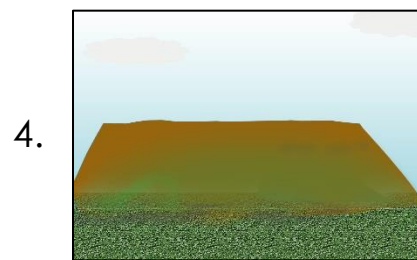
\_\_\_\_\_



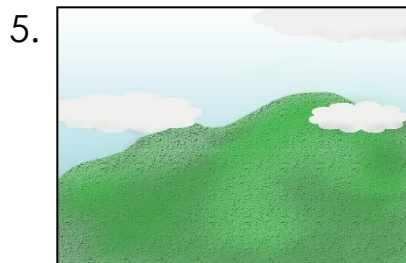
\_\_\_\_\_



\_\_\_\_\_



\_\_\_\_\_



\_\_\_\_\_

plateau

mountain

plain

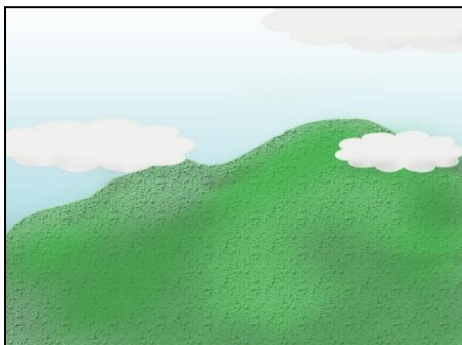
valley

volcano

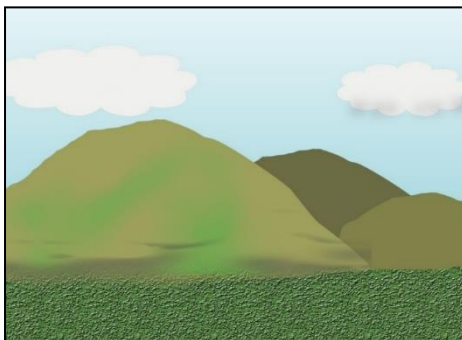


## What is It

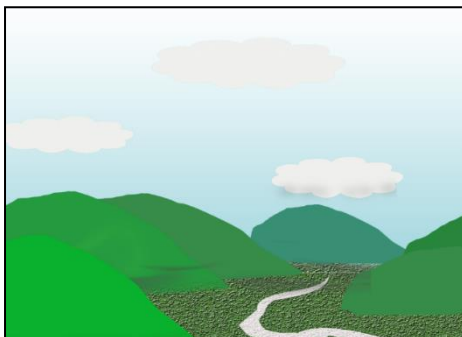
A landform is the shape and form of the earth's land surface. Landforms can be **mountains**, **hills**, **valleys**, **plateaus**, **plains**, and **volcanoes**.



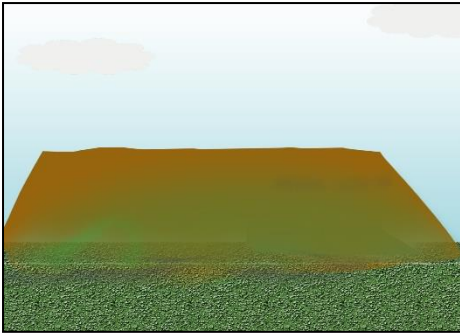
A **mountain** is the highest landform in the earth's surface.



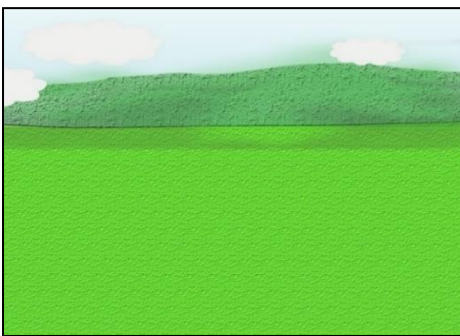
A **hill** is a landform that is smaller and lower than a mountain.



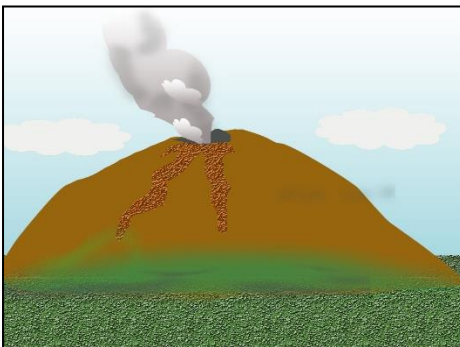
A **valley** is a low-lying area between hills or mountains.



A **plateau** is a plain on top of a mountain or a hill. It is also called as tableland.



A **plain** is a flat surface of land which is generally used in farming and growing rice and corn.



A **volcano** is a landform that sends out lava and rocks during eruption.



## What's More

Match each landform in Column A to its definition in Column

B. Write the letter of the answer on the blank provided.

### Column A

- \_\_\_\_\_ 1. plain
- \_\_\_\_\_ 2. volcano
- \_\_\_\_\_ 3. plateau
- \_\_\_\_\_ 4. mountain
- \_\_\_\_\_ 5. valley

### Column B

- a. the highest landform in the earth's surface
- b. a landform that sends out lava and rocks during eruption
- c. a flat surface of land which is generally used in farming and growing rice and corn
- d. a plain on top of a mountain or a hill
- e. a low-lying area between hills or mountains



## What I Have Learned

Complete the following sentences. Write your answers on the blanks provided.

I learned that...

Landforms can be \_\_\_\_\_, \_\_\_\_\_,  
\_\_\_\_\_, \_\_\_\_\_, \_\_\_\_\_, and  
\_\_\_\_\_.

A \_\_\_\_\_ is the highest landform in the earth's surface.

A \_\_\_\_\_ is a landform that is smaller and lower than a mountain.

A \_\_\_\_\_ is a low-lying area between hills or mountains.

A \_\_\_\_\_ is a plain on top of a mountain or a hill. It is also called tableland.

A \_\_\_\_\_ is a flat surface of land which generally used in farming and growing rice and corn.

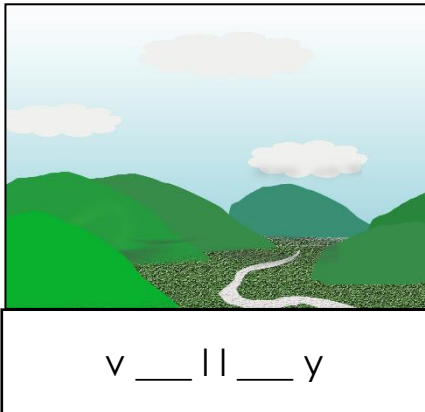
A \_\_\_\_\_ is a landform that sends out lava and rocks during eruption.



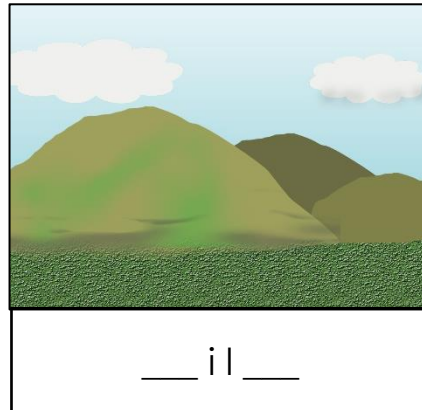
## What I Can Do

Write the missing letters to form the word that tells about the picture.

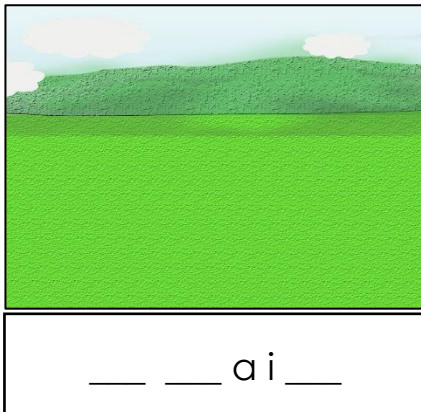
1.



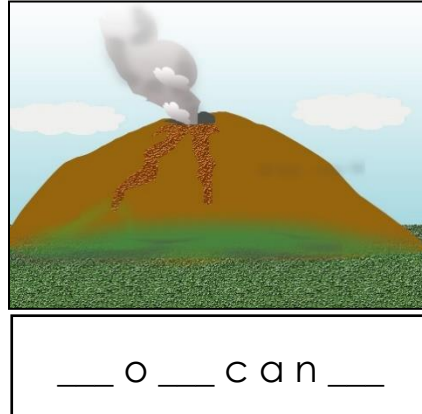
2.



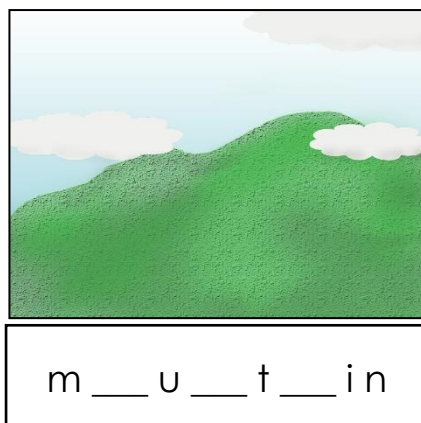
3.



4.



5.







## Assessment

Fill in the blank with the correct answer in each item given below.

1. A landform that sends out lava and rocks during eruption is called \_\_\_\_\_.
2. \_\_\_\_\_ is a plain on top of a mountain or a hill.
3. A low-lying area between hills or mountains is called \_\_\_\_\_.
4. A landform that is smaller and lower than a mountain is called \_\_\_\_\_.
5. A \_\_\_\_\_ means the highest landform in the earth's surface.



## ***Additional Activities***

In your own community, what are the different landforms that you can find? List at least two (2).

1. \_\_\_\_\_
2. \_\_\_\_\_

## Lesson

# 2

## Waterforms



### What's In

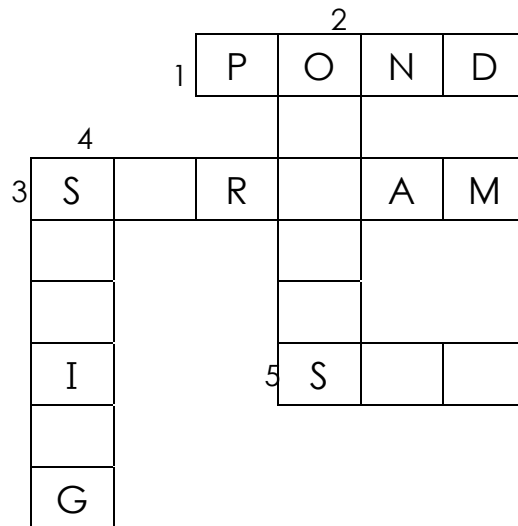
Write True if the statement is correct and False if it is not. Write the answer on the blank before the number.

- \_\_\_\_\_ 1. A sea is the largest body of saltwater.
- \_\_\_\_\_ 2. River is water source coming out of the ground.
- \_\_\_\_\_ 3. Lake is a usually still large body of freshwater surrounded by land.
- \_\_\_\_\_ 4. A sea is a large body of saltwater but smaller than an ocean.
- \_\_\_\_\_ 5. A river is large flowing body of water that goes into the sea, ocean, or lake.



## What's New

Find out the different bodies of water in the crossword puzzle.  
The first one is given for you.



### ACROSS

- 1 - a small body of water surrounded by land and is usually formed when heavy rains occur
- 3 - a shallow body of water that flows with a current and is usually smaller than a river
- 5 - a large body of saltwater but smaller than an ocean

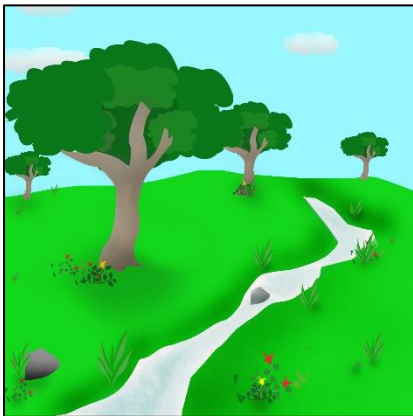
### DOWN

- 2 - large flowing body of water that goes into the sea, ocean, or lake
- 4 - the largest bodies of saltwater



## What is It

Water is very important to all living things. People, animals, and plants need water to survive. There are different bodies of water such as stream, spring, river, pond, lake, sea and ocean.



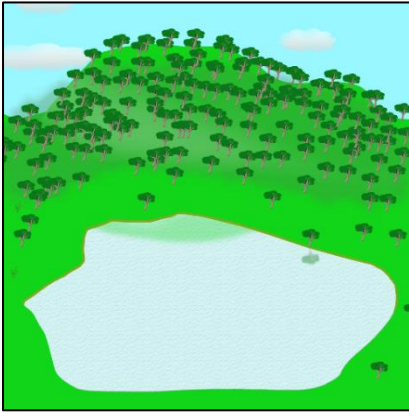
A **stream** is a shallow body of water that flows with a current and is usually smaller than a river.



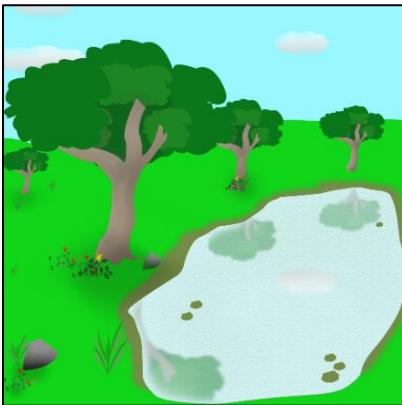
A **river** is large flowing body of water that goes into the sea, ocean, or lake.



A **spring** is water source coming out of the ground.



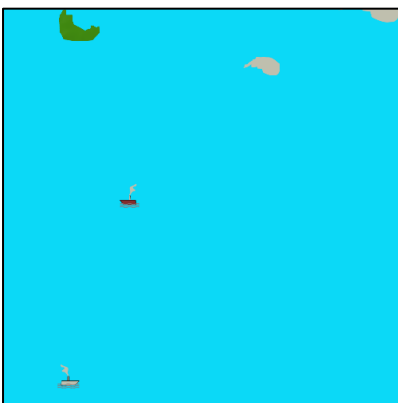
**Lake** is a usually still large body of freshwater surrounded by land.



A **pond** is a small body of water surrounded by land and is usually formed when heavy rains occur.



A **sea** is a large body of saltwater but smaller than an ocean.



An **ocean** is the largest body of saltwater.



## What's More

Find the water words listed below. Encircle the word horizontally or vertically.

lake      river      ocean      spring      sea

S	A	B	O	S	C	D	E
T	F	G	C	P	G	H	I
R	I	V	E	R	J	K	L
E	M	N	A	I	O	P	Q
A	R	S	N	N	T	S	U
M	V	W	X	G	X	E	Y
Z	A	B	C	D	B	A	Y
E	L	A	K	E	G	H	K



## *What I Have Learned*

Complete the following sentences. Write your answers on the blanks provided.

I learned that...

Water is very important to all living things. People, animals, and plants need water to survive. There are different bodies of water such as \_\_\_\_\_, \_\_\_\_\_, \_\_\_\_\_, \_\_\_\_\_, \_\_\_\_\_ and \_\_\_\_\_.

A \_\_\_\_\_ is a shallow body of water that flows with a current and is usually smaller than a river.

A \_\_\_\_\_ is large flowing body of water that goes into the sea, ocean, or lake.

A \_\_\_\_\_ is water source coming out of the ground.

\_\_\_\_\_ is a usually still large body of freshwater surrounded by land.

A \_\_\_\_\_ is a small body of water surrounded by land and is usually formed when heavy rains occur.

A \_\_\_\_\_ is a large body of saltwater but smaller than an ocean.

An \_\_\_\_\_ is the largest body of saltwater.



## *What I Can Do*

Fill in the blanks with the correct answer. Choose your answer from the words written in the box.

river	pond	stream	sea
lake			

1. A \_\_\_\_\_ is a small body of water surrounded by land and is usually formed when heavy rains occur.
2. A \_\_\_\_\_ is a shallow body of water that flows with a current and is usually smaller than a river.
3. A \_\_\_\_\_ is large flowing body of water that goes into the sea, ocean, or lake.
4. A \_\_\_\_\_ is a large body of saltwater but smaller than an ocean.
5. \_\_\_\_\_ is a usually still large body of freshwater surrounded by land.





## Assessment

Read the following sentences carefully. Choose and encircle the letter of the correct answer.

1. It is a small body of water surrounded by land and is usually formed when heavy rains occur.

- a. river                      b. pond                      c. sea                      d. spring

2. This is a shallow body of water that flows with a current and is usually smaller than a river.

- a. stream                      b. ocean                      c. sea                      d. spring

3. It is large flowing body of water that goes into the sea, ocean, or lake.

- a. stream                      b. pond                      c. river                      d. spring

4. This is a large body of saltwater but smaller than an ocean.

- a. stream                      b. river                      c. sea                      d. ocean

5. It is usually a still large body of freshwater surrounded by land.

- a. river                      b. lake                      c. stream                      d. spring



## ***Additional Activities***

Write at least five (5) bodies of water that you learned from this lesson.

1. \_\_\_\_\_

2. \_\_\_\_\_

3. \_\_\_\_\_

4. \_\_\_\_\_

5. \_\_\_\_\_

## Lesson

# 3

## Things in the Surroundings



### What's In

Write True if the statement is correct and False if it is not. Write the answer on the blank before the number.

- \_\_\_\_\_ 1. Stones can be found in the surroundings.
- \_\_\_\_\_ 2. A chicken is a living thing.
- \_\_\_\_\_ 3. Ducks can be found in a pond.
- \_\_\_\_\_ 4. Fishes are found in different bodies of water.
- \_\_\_\_\_ 5. Non-living things like animals and plants are present in the surroundings.



## What's New

Look at the picture below.



What are the things you can find in the picture above? List the things you can find in the picture.

Things found in the Surroundings	
1.	
2.	
3.	
4.	
5.	



## What is It

There are many things that can be found in the surroundings: they could be classified as living or non-living. **Living things** such as plants and animals could be present around and in the bodies of water. Many **non-living things** could also be found in the surroundings such as stones, air, water, and others.



## What's More

Put a check (/) on the blank provided if it the word refers to a thing that could be found in the surroundings. Put an X if it is not.

\_\_\_\_\_ 1. stone

\_\_\_\_\_ 2. dog

\_\_\_\_\_ 3. tree

\_\_\_\_\_ 4. chicken

\_\_\_\_\_ 5. stick



## What I Have Learned

Complete the following sentences. Write your answers on the blanks provided.

I learned that...

Living things and non-living things can be found in the surroundings. \_\_\_\_\_ such as plants and animals could be present around and in the bodies of water. Many \_\_\_\_\_ could also be found in the surroundings such as stones, air, water, and others.



## What I Can Do

Go back and look again at the picture on **What's New**, list the things you can find in the picture and classify them as living and non-living. The first ones are done for you.

Living Things	Non-living Things
1. ducks	1. clouds
2.	2.
3.	3.
4.	4.
5.	5.



## Assessment

Classify the things listed as living or non-living. Write them inside the assigned circles.

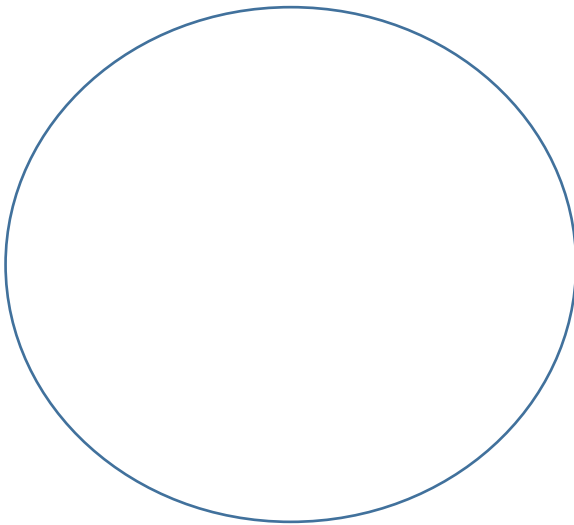
stone

trees

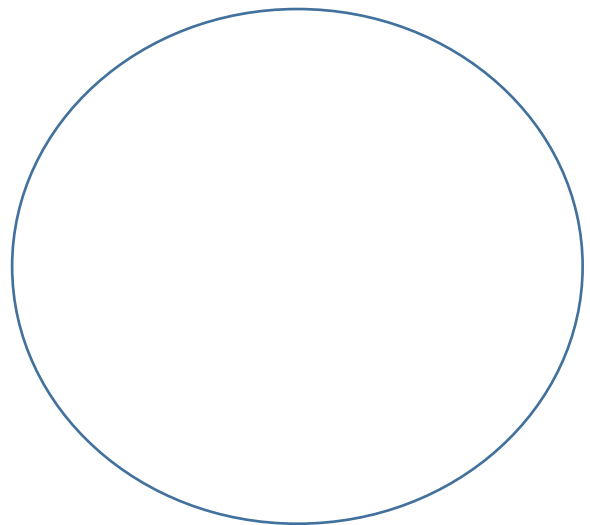
water

dog

cat



**LIVING THINGS**



**NON-LIVING THINGS**



## Additional Activities

In your own community, what are the different living and non-living things that you can find? List at least five (5).

1. \_\_\_\_\_

2. \_\_\_\_\_

3. \_\_\_\_\_

4. \_\_\_\_\_

5. \_\_\_\_\_



## Lesson

# 4

## Importance of Surroundings to People and Other Living Things



### What's In

Write True if the statement is correct and False if it is not. Write the answer on the blank before the number.

- \_\_\_\_\_ 1. Plants provide food for people and animals.
- \_\_\_\_\_ 2. Air and water are important to all living things.
- \_\_\_\_\_ 3. Plants get nutrients from the soil through its roots.
- \_\_\_\_\_ 4. You can find fishes in different kinds of bodies of water.
- \_\_\_\_\_ 5. Animals are not important for other living things.



## What's New

**Encircle** the things that are important to people and other living things. Put an **X** mark on the word that is **NOT** important.

stone	tree	goat	chicken
duck	soil	grass	water
cat	tomato	dog	air
sampaguita	dragonfly	rocks	coconut



## What is It

People use different parts of plants and trees for raw materials in building houses and making clothing. We also use some plant parts such as leaves for food and medicine. Insects and other organisms also benefit from plants and trees. Plants become the habitat for these organisms and also provide them food.

Non-living things in the environment are also present in the environment. Non-living things are also important to living things. Most plants grow their roots in the soil or earth to get water and

nutrients and minerals in order to grow and survive. People also use gravel in building houses.



## What's More

Write the missing words on the blanks provided. Select your answers from the box below.

Living things live in the surroundings or (1) \_\_\_\_\_.  
All living things benefit from the environment they live in. They benefit the essential things in life such as (2) \_\_\_\_\_ and water. Animals, plants and also (3) \_\_\_\_\_ live and depend on each other. Living things depend on other living things in order to (4) \_\_\_\_\_ such as people and animals need plants for food, shelter, (5) \_\_\_\_\_, and others.

medicine	people	environment
air	survive	



## What I Have Learned

Complete the following sentences. Write your answers on the blanks provided.

I learned that...

All living things benefit from the \_\_\_\_\_ they live in. They benefit from the essential things in life such as air and water. Living things depend on other living things in order to \_\_\_\_\_.

Plants and trees are useful to \_\_\_\_\_ because they provide raw materials for building houses, making clothing, and many others. Other living things such as insects and other organisms also benefit from plants and trees. Plants and trees become the \_\_\_\_\_ for these organisms and also provide them food.

\_\_\_\_\_ things are also important to living things. The soil provides water, minerals, and nutrients in order for the plants to grow, develop and reproduce.



## *What I Can Do*

Give at least five (5) things why surroundings are important to people and other living things.

Ex. Source of food

1. \_\_\_\_\_
2. \_\_\_\_\_
3. \_\_\_\_\_
4. \_\_\_\_\_
5. \_\_\_\_\_



## *Assessment*

Fill in the blank with the correct answer in each item given below.

1. Fishes can be found in bodies of \_\_\_\_\_.
2. \_\_\_\_\_ and 3. \_\_\_\_\_ provide raw materials in building houses and making clothes.
4. Insects and other organisms benefit from plants by making the plants their \_\_\_\_\_ and source of 5. \_\_\_\_\_.



## *Additional Activities*

In your own opinion, why are surroundings important to you and to other living things? Give at least four (4) details.

Surroundings are important to me/us and to other living things \_\_\_\_\_ because \_\_\_\_\_

---

---

---

---

---

### **Rubric for Additional Activities:**

Points	Description
5	The sentence is provided with four or more correct details which demonstrates full understanding.
4	The sentence is provided with three correct details which demonstrates good understanding.
3	The sentence is provided with two correct details which demonstrates good understanding.

2	The sentence is provided with one correct detail but has added wrong detail/s which does not demonstrate good understanding.
1	The sentence is provided with wrong detail/s which demonstrates lack of understanding.
0	No answer at all.



## Answer Key: Lesson 1

<p>What I Know</p> <ol style="list-style-type: none"><li>1. b</li><li>2. b</li><li>3. c</li><li>4. c</li><li>5. a</li></ol>	<p>What's In</p> <ol style="list-style-type: none"><li>1. plateau</li><li>2. hills</li><li>3. valley</li><li>4. plain</li><li>5. mountain</li><li>6. volcano</li></ol>	<p>What's New</p> <ol style="list-style-type: none"><li>1. valley</li><li>2. volcano</li><li>3. plain</li><li>4. plateau</li><li>5. mountain</li></ol>	<p>What's More</p> <ol style="list-style-type: none"><li>1. c</li><li>2. b</li><li>3. d</li><li>4. a</li><li>5. e</li></ol>
<p>What I Have Learned</p> <p>Landforms can be <b>mountains, hills, valleys, plateaus, plains, and volcanoes.</b></p> <p>A <b>mountain</b> is the highest landform in the earth's surface.</p> <p>A <b>hill</b> is a landform that is smaller and lower than a mountain.</p> <p>A <b>valley</b> is a low-lying area between hills or mountains.</p> <p>A <b>plateau</b> is a plain on top of a mountain or a hill. It is also called tableland.</p> <p>A <b>plain</b> is a flat surface of land which generally used in farming and growing rice and corn.</p> <p>A <b>volcano</b> is a landform that sends out lava and rocks during eruption.</p>			
<p>What I Can Do</p> <ol style="list-style-type: none"><li>1. valley</li><li>2. hills</li><li>3. plain</li><li>4. volcano</li><li>5. mountain</li></ol>	<p>Assessment</p> <ol style="list-style-type: none"><li>1. volcano</li><li>2. plateau</li><li>3. valley</li><li>4. hill</li><li>5. mountain</li></ol>	<p>Additional Activities</p> <ol style="list-style-type: none"><li>1. valley</li><li>2. hills</li><li>3. plain</li><li>4. volcano</li><li>5. mountain</li><li>6. plateau</li></ol>	





## Answer Key: Lesson 2

<p><b>What I Can Do</b></p> <ol style="list-style-type: none"> <li>1. pond</li> <li>2. stream</li> <li>3. river</li> <li>4. sea</li> <li>5. lake</li> </ol>	<p><b>Assessment</b></p> <ol style="list-style-type: none"> <li>1. b</li> <li>2. a</li> <li>3. c</li> <li>4. c</li> <li>5. b</li> </ol>	<p><b>Additional Activities</b></p> <ol style="list-style-type: none"> <li>1. pond</li> <li>2. stream</li> <li>3. river</li> <li>4. sea</li> <li>5. lake</li> </ol> <p>spring ocean</p>
---	---	---

**What I Have Learned**

Water is very important to all living things. People, animals, and plants need water to survive. There are different bodies of water such as **stream, spring, river, pond, lake, sea** and **ocean**.

A **stream** is a shallow body of water that flows with a current and is usually smaller than a river.

A **river** is large flowing body of water that goes into the sea, ocean, or lake.

A **spring** is water source coming out of the ground.

**Lake** is a usually still large body of freshwater surrounded by land.

A **pond** is a small body of water surrounded by land and is usually formed when heavy rains occur.

A **sea** is a large body of saltwater but smaller than an ocean.

An **ocean** is the largest body of saltwater.

<p><b>What's In</b></p> <ol style="list-style-type: none"> <li>1. False</li> <li>2. False</li> <li>3. True</li> <li>4. True</li> <li>5. True</li> </ol>	<p><b>What's New</b></p> <ol style="list-style-type: none"> <li>1. POND</li> <li>2. OCEANS</li> <li>3. STREAM</li> <li>4. SPRING</li> <li>5. SEA</li> </ol>	<p><b>What's More</b></p> <table border="1"> <tr> <td>E</td><td>S</td><td>T</td><td>R</td><td>E</td><td>A</td><td>L</td><td>E</td><td>G</td><td>H</td><td>K</td> </tr> <tr> <td>Z</td><td>A</td><td>F</td><td>I</td><td>V</td><td>B</td><td>A</td><td>D</td><td>B</td><td>A</td><td>Y</td> </tr> <tr> <td>M</td><td>V</td><td>G</td><td>N</td><td>X</td><td>W</td><td>X</td><td>G</td><td>X</td><td>E</td><td>D</td> </tr> <tr> <td>A</td><td>R</td><td>S</td><td>N</td><td>S</td><td>S</td><td>N</td><td>N</td><td>T</td><td>S</td><td>N</td> </tr> <tr> <td>E</td><td>M</td><td>N</td><td>A</td><td>I</td><td>O</td><td>I</td><td>O</td><td>P</td><td>O</td><td>P</td> </tr> <tr> <td>R</td><td>I</td><td>V</td><td>E</td><td>R</td><td>J</td><td>K</td><td>J</td><td>K</td><td>P</td><td>P</td> </tr> <tr> <td>T</td><td>F</td><td>G</td><td>C</td><td>P</td><td>G</td><td>H</td><td>G</td><td>H</td><td>I</td><td>I</td> </tr> <tr> <td>S</td><td>A</td><td>B</td><td>O</td><td>S</td><td>C</td><td>D</td><td>C</td><td>D</td><td>E</td><td>E</td> </tr> </table>	E	S	T	R	E	A	L	E	G	H	K	Z	A	F	I	V	B	A	D	B	A	Y	M	V	G	N	X	W	X	G	X	E	D	A	R	S	N	S	S	N	N	T	S	N	E	M	N	A	I	O	I	O	P	O	P	R	I	V	E	R	J	K	J	K	P	P	T	F	G	C	P	G	H	G	H	I	I	S	A	B	O	S	C	D	C	D	E	E
E	S	T	R	E	A	L	E	G	H	K																																																																																
Z	A	F	I	V	B	A	D	B	A	Y																																																																																
M	V	G	N	X	W	X	G	X	E	D																																																																																
A	R	S	N	S	S	N	N	T	S	N																																																																																
E	M	N	A	I	O	I	O	P	O	P																																																																																
R	I	V	E	R	J	K	J	K	P	P																																																																																
T	F	G	C	P	G	H	G	H	I	I																																																																																
S	A	B	O	S	C	D	C	D	E	E																																																																																



Answer Key: Lesson 3

Additional Activities

1. stones  
2. duck/s  
3. dog  
4. bird/s  
5. tree/s  
eagle  
cat  
fish  
grass/es  
plant/s  
butterfly/ies  
insects  
*(any possible answer)*

Assessment

LIVING THINGS

trees  
dog  
cat

NON-LIVING THINGS

water  
stone

What I Have Learned

Living things and non-living things can be found in the surroundings. **Living things** such as plants and animals could be present around and in the bodies of water. Many **non-living things** could also be found in the surroundings such as stones, air, water, and others.

What I Can Do

Living Things	1. ducks 2. dog 3. cat 4. bird 5. tree
Other possible answers: fish, butterfly, insects	
Non-living Things	1. clouds 2. stone 3. water 4. air 5. soil
Other possible answers: land, rock/s, sun	

What's In

1. True  
2. True  
3. True  
4. True  
5. False

What's New

1. stones  
2. duck/s  
3. dog  
4. bird/s  
5. tree/s  
eagle  
cat  
fish  
grass/es  
plant/s  
butterfly/ies  
insects  
sun

What's More

1. /  
2. /  
3. /  
4. /  
5. /



## Answer Key: Lesson 4

<p><b>Assessment</b></p> <ol style="list-style-type: none"><li>1. water</li><li>2. plants</li><li>3. trees</li><li>4. habitat</li><li>5. food</li></ol>	<p><b>Additional Activities</b></p> <p>Answers of the learner could have the following idea:</p> <ul style="list-style-type: none"><li>• provides shelter</li><li>• provides habitat</li><li>• source of raw materials for making clothing</li><li>• source of raw materials for building houses</li><li>• source of water and air</li><li>• source of medicine</li></ul> <p>(any possible answer) 5 points is given</p>	
<p><b>What's In</b></p> <ol style="list-style-type: none"><li>1. True</li><li>2. True</li><li>3. True</li><li>4. True</li><li>5. False</li></ol>	<p><b>What's New</b></p> <p>(all words are encircled individually)</p>	<p><b>What's More</b></p> <ol style="list-style-type: none"><li>1. environment</li><li>2. air</li><li>3. people</li><li>4. survive</li><li>5. medicine</li></ol>
<p><b>What I Have Learned</b></p> <p>All living things benefit from the <b>environment</b> they live in. They benefit from the essential things in life such as air and water. Living things depend on other living things in order to <b>survive</b>.</p> <p>Plants and trees are useful to <b>people</b> because they provide raw materials for building houses, making clothing, and many others. Other living things such as insects and other organisms also benefit from plants and trees. Plants and trees become the <b>habitat</b> for these organisms and also provide them food.</p> <p><b>Non-living</b> things which are also important to living things. The soil provides water, minerals, and nutrients in order for the plants grow, develop and reproduce.</p>		
<p><b>What I Can Do</b></p> <ul style="list-style-type: none"><li>• provides shelter</li><li>• provides habitat</li><li>• source of raw materials for making clothing</li><li>• source of raw materials for building houses</li><li>• source of water and air</li><li>• source of medicine</li></ul>		

## *References*

**For inquiries or feedback, please write or call:**

Department of Education - Bureau of Learning Resources (DepEd-BLR)

Ground Floor, Bonifacio Bldg., DepEd Complex  
Meralco Avenue, Pasig City, Philippines 1600

Telefax: (632) 8634-1072; 8634-1054; 8631-4985

Email Address: [blr.lrqad@deped.gov.ph](mailto:blr.lrqad@deped.gov.ph) \* [blr.lrpd@deped.gov.ph](mailto:blr.lrpd@deped.gov.ph)